



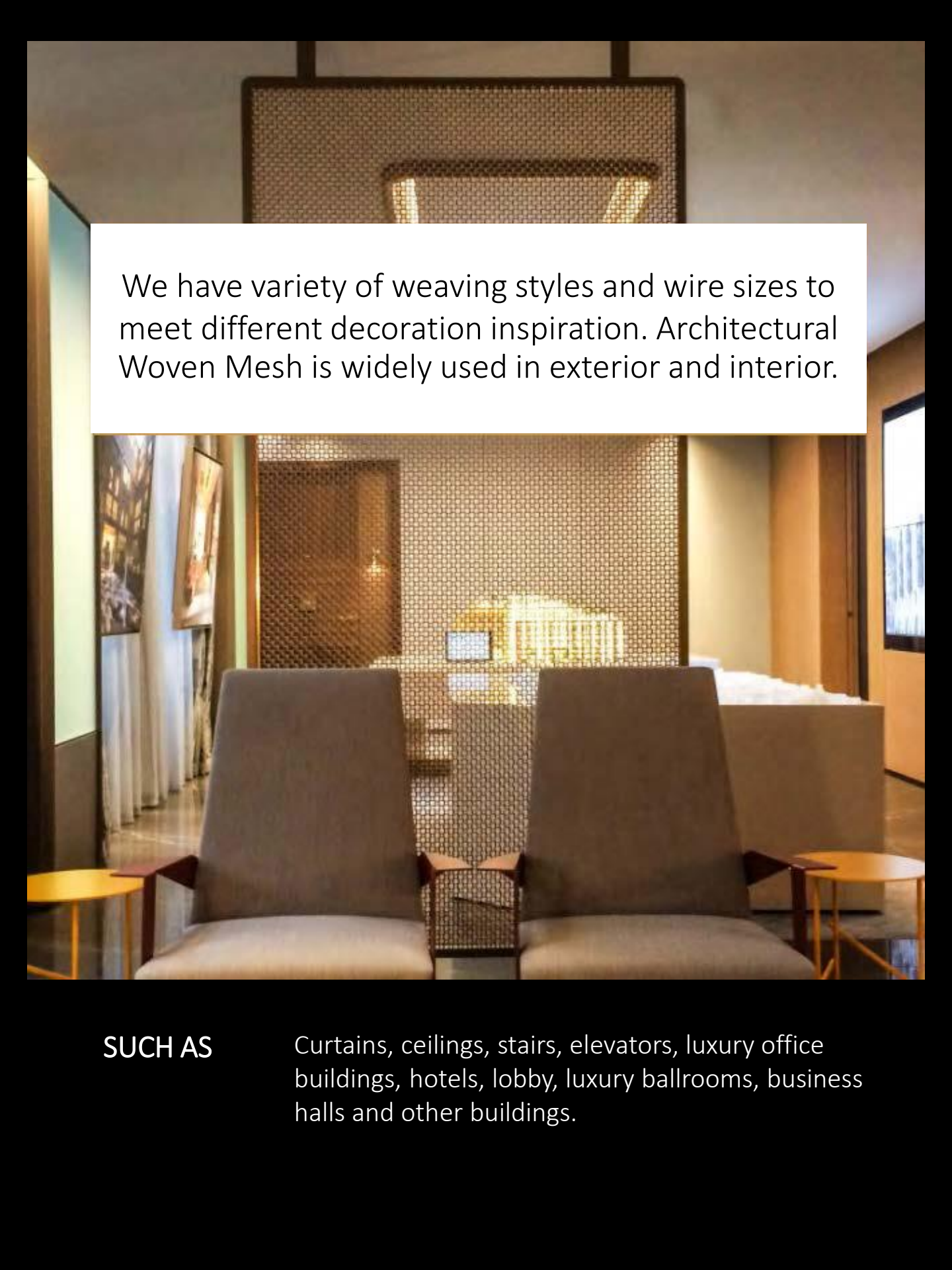
Dt

**Metal Mesh & Metal Fabric
2024**



DI Metal Mesh

Architectural Woven Mesh is also called Decorative crimped woven mesh, it is made from stainless steel mostly, aluminum, cooper, brass material is also available to design this product.



We have variety of weaving styles and wire sizes to meet different decoration inspiration. Architectural Woven Mesh is widely used in exterior and interior.

SUCH AS

Curtains, ceilings, stairs, elevators, luxury office buildings, hotels, lobby, luxury ballrooms, business halls and other buildings.

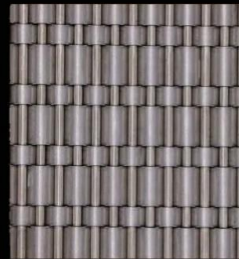


It not only has superior feature than the original architecture elements, but also has nice appearance which will catch our eyes easily, it becomes more and more popular among designers for construction decoration.

PRODUCT SPECIFICATION



QKCWM-01
Warp Diameter:1.5mm
Weft Diameter:2mm
Warp Pitch:4mm
Weft Pitch:17.5mm
Weight:2.5kg/m²
Opening Area:45.7%



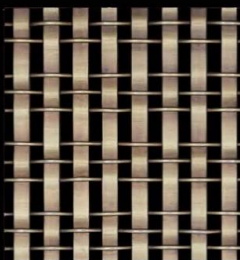
QKCWM-02
Warp Diameter: 3mm
Weft Diameter:
6.2x1mm,3.1x1mm
Warp Pitch:6.5mm
Weft Pitch:9.3mm
Weight:22.7kg/m²
Opening Area:0%



QKCWM-03
Warp Diameter:1.5mm
Weft Diameter:2mm
Warp Pitch:5mm
Weft Pitch: 3mm
Weight:11.4kg/m²
Opening Area:0%



QKCWM-04
Warp Diameter:1.2x5mm
Weft Diameter:1.2x5mm
Warp Pitch:12.7mm
Weft Pitch:12.7mm
Weight:7.8kg/m²
Opening Area:36.75%



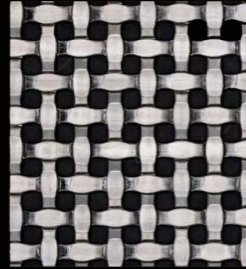
QKCWM-05
Warp Diameter: 1mm
Weft Diameter:1x4mm
Warp Pitch:20mm
Weft Pitch:8mm
Weight:5.3kg/m²
Opening Area:36.4%



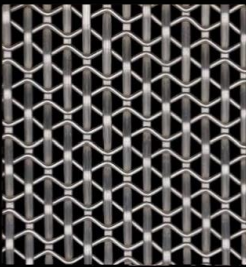
QKCWM-06
Warp Diameter:1.5x3.5mm
Weft Diameter:1.5x3.5mm
Warp Pitch:10mm
Weft Pitch:10mm
Weight:8.6kg/m²
Opening Area:42.2%



QKCWM-07
 Warp Diameter:0.75x2mm
 Weft Diameter:0.75x2mm
 Warp Pitch: 15mm
 Weft Pitch:15mm
 Weight:6.5kg/m²
 Opening Area: 9.2%



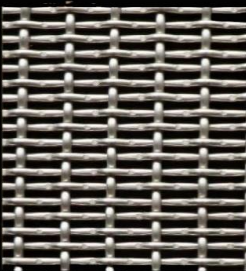
QKCWM-08
 Warp Diameter:1.1x3.4mm
 Weft Diameter:1.1x3.4mm
 Warp Pitch:6.6mm
 Weft Pitch:6.6mm
 Weight:11.55kg/m²
 Opening Area:24%



QKCWM-10
 Warp Diameter:1.5mm
 Weft Diameter:2mm
 Warp Pitch:4mm
 Weft Pitch:17.5mm
 Weight:2.5kg/m²
 Opening Area:45.7%



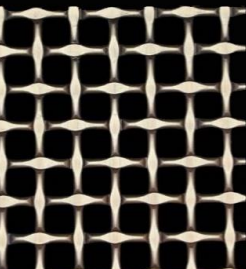
QKCWM-09
 Warp Diameter:1.2x2mm
 Weft Diameter:2mm
 Warp Pitch:5mm
 Weft Pitch:5mm
 Weight:8.74kg/m²
 Opening Area:31%



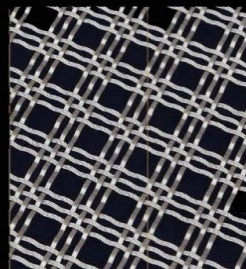
QKCWM-11
 Warp Diameter:2mm
 Weft Diameter:1.8mm
 Warp Pitch:9mm
 Weft Pitch:4mm
 Weight:7.96kg/m²
 Opening Area:44%



QKCWM-12
 Warp Diameter: 1.4x3mm,1.0x10mm
 Weft Diameter: 1.4x3mm,1.0x10mm
 Warp Pitch:63mm
 Weft Pitch:63mm
 Weight:7.8kg/m²
 Opening Area:45.9%



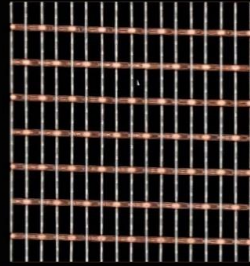
QKCWM-13
 Warp Diameter:2.5mm
 Weft Diameter:2.5mm
 Warp Pitch:8.5mm
 Weft Pitch:8.5mm
 Weight: 9.38kg/m²
 Opening Area:42.2%



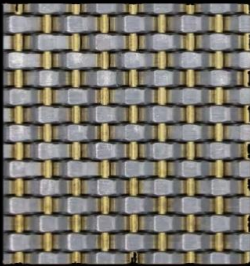
QKCWM-14
 Warp Diameter:1.2x3.5mm
 Weft Diameter:1.2x3.5mm
 Warp Pitch:42mm
 Weft Pitch:42mm
 Weight:4.8kg/m²
 Opening Area:58.7%



QKCWM-15
 Warp Diameter:1.5mm
 Weft Diameter:2mm
 Warp Pitch:7mm
 Weft Pitch:8mm
 Weight:14.74kg/m²
 Opening Area:0%



QKCWM-16
 Warp Diameter:0.8mm
 Weft Diameter:1.5mm
 Warp Pitch:2.88mm Weft
 Pitch:7.25mm
 Weight:4.1kg/m²
 Opening Area:53.9%



QKCWM-17
 Warp Diameter:1.6mm
 Weft Diameter:1.7x4mm
 Warp Pitch:4.5mm
 Weft Pitch:4mm
 Weight:15.2kg/m²
 Opening Area:0%



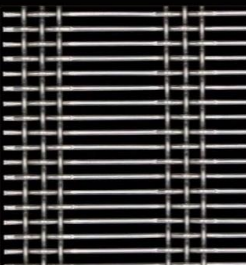
QKCWM-19
 Warp Diameter:1x10mm
 Weft Diameter:1x10mm
 Warp Pitch:13mm
 Weft Pitch:13mm
 Weight:12.5kg/m²
 Opening Area:5.3%



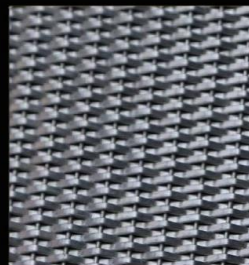
QKCWM-20
 Warp Diameter:2mm
 Weft Diameter:2mm
 Warp Pitch:12.7mm
 Weft Pitch:12.7mm
 Weight:4kg/m²
 Opening Area:58.3%



QKCWM-21
 Warp Diameter:0.6x1.75mm
 Weft Diameter:0.6x1.75mm
 Warp Pitch:5mm
 Weft Pitch:5mm
 Weight:3.36kg/m²
 Opening Area:41%



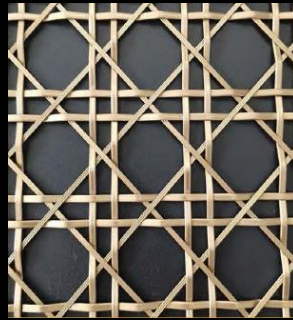
QKCWM-23
 Warp Diameter:2.5mmx3
 Weft Diameter:3mm
 Warp Pitch:90.5mm
 Weft Pitch:12mm
 Weight:6.08kg/m²
 Opening Area:68.8%



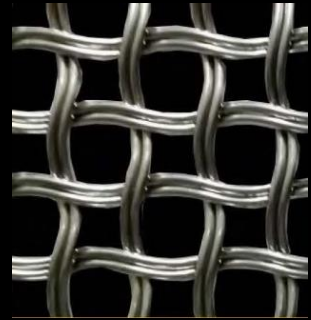
QKCWM-24
 Warp Diameter:2mm
 Weft Diameter:2x3mm
 Warp Pitch:8mm
 Weft Pitch:3mm
 Weight:20.5kg/m²
 Opening Area:0%



QKCWM-22
 Warp Diameter: 2mm
 Weft Diameter: 1.5mm
 Warp Pitch: 17.5mm
 Weft Pitch: 1.5mm
 Weight: 11.67kg/m²
 Opening Area: 0%



QKCWM-25
 Warp Diameter: 3.0x1.5mm
 Weft Diameter: 4.0x1.7mm
 Warp Pitch: 40mm
 Weft Pitch: 38mm
 Weight: 4.4kg/m²
 Opening Area: 56%

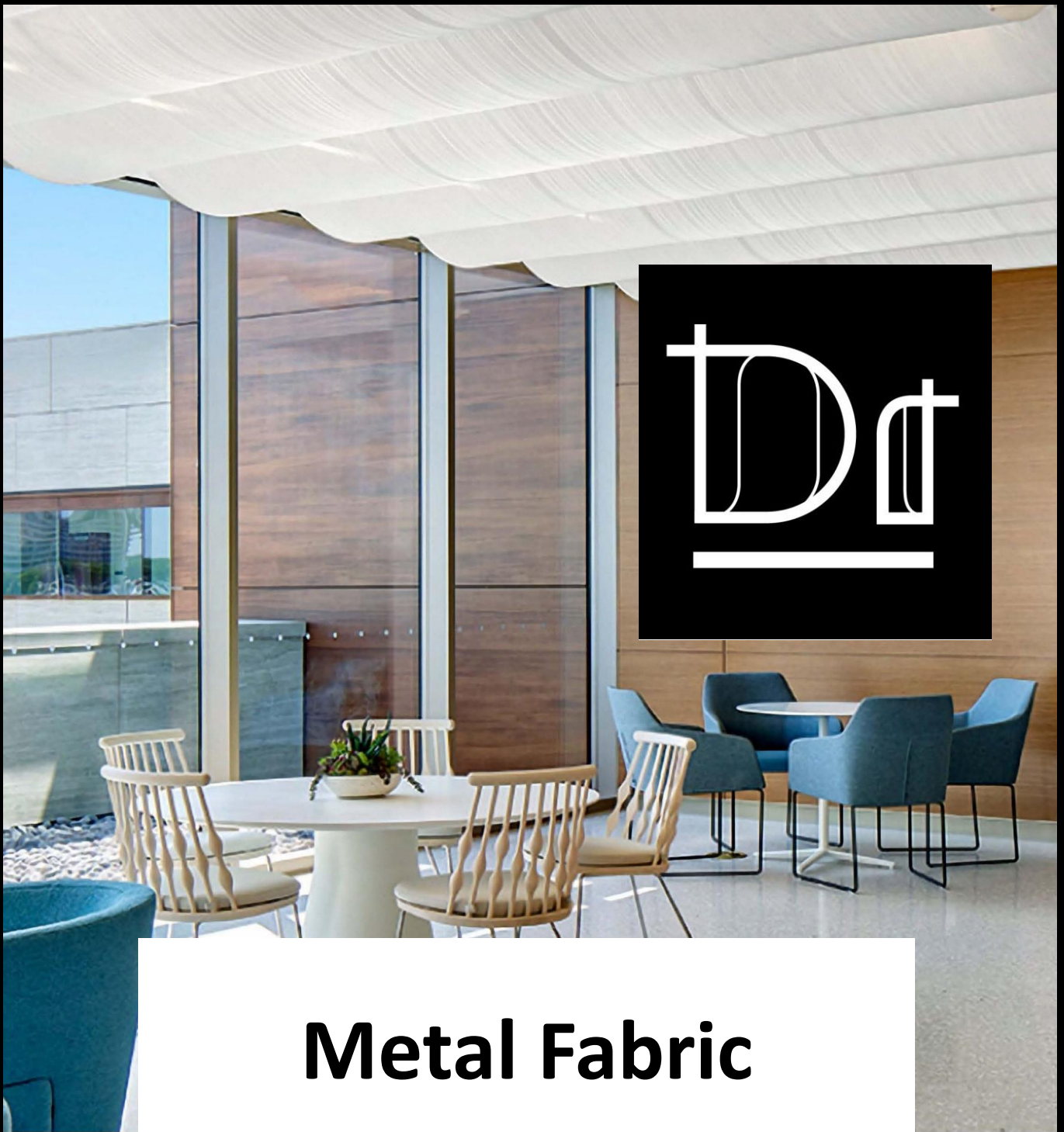


QKCWM-26
 Warp Diameter: 2.5mmx2
 Weft Diameter: 2.5mmx2
 Warp Pitch: 16mm
 Weft Pitch: 16mm
 Weight: 10kg/m²
 Opening Area: 52%

Architectural Mesh For Elevator Interior

Tiny mesh opening





Metal Fabric

Woven metal interiors is metal textile fabric made from soft fine wire, generally, it is stick with fabric at back and is applied as wall covering, window treatments and glass lamination with hundreds of different styles and colors for customers option.

Bespoke gradients, specially mixed colors, and carefully crafted metal weaves.

**Truly unique, exclusive,
and never seen before.**



PRODUCT SPECIFICATION



QKDB-20



QKDB-23



QKDB-26



QKDB-28



QKDB-33



QKDB-36



QKDB-38



QKDB-43



QKDB-44



QKDB-46



QKDB-313



QKDBX2-01



QKDBX-07



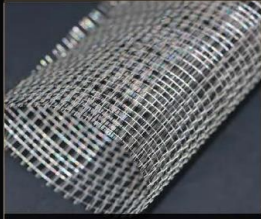
QKDBX2-08



QKDBX-09



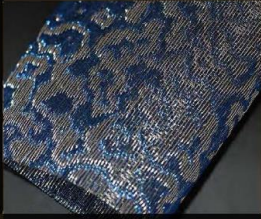
QKDBX-11Y



QKDBX-15



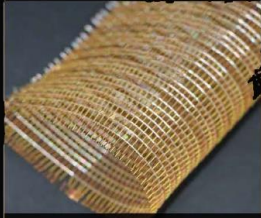
QKDBX-21



QKDBX-27



QKDBX-28



QKDBX-28A



QKDB-29



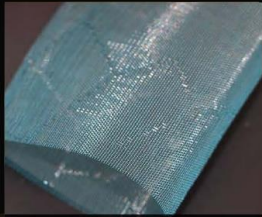
QKTH-01



QKTH-02



QKTH2-01



QKTH2-03A



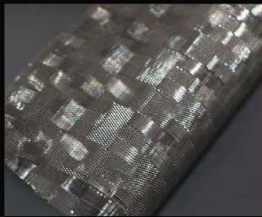
QKTH2-05



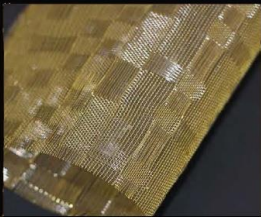
QKTH2-14



QKTH2-15



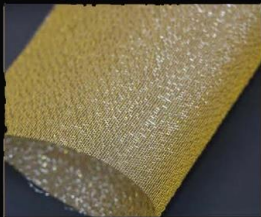
QKTH2-16



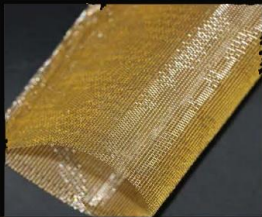
QKTH2-16A



QKTH2-17C



QKTH2-19A



QKTH2-20



QKTH2-21



QKTH2-22



QKTH2-23



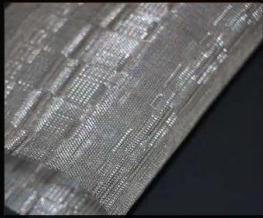
QKTH2-25



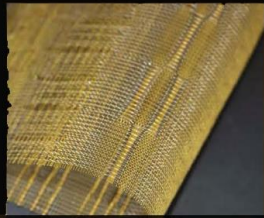
QKTH2-26



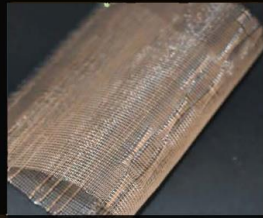
QKTH2-27



QKTH2-29



QKTH-05



QKTH-05B



QKTH-07



QKTH-07B



QKTH-08



QKTH-08B



QKTH-08D



QKTH-08I



QKTH-08N



QKTH-10



QKTH-12



QKTH-14-2



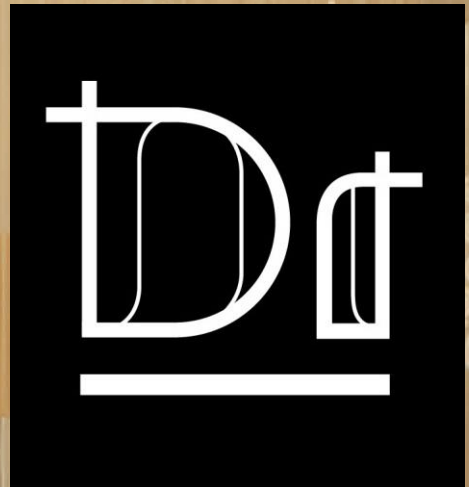
QKTH-14-2A



QKTH-14B



QKTH-14D



Metal Coil Drapery

Metal coil drapery is a type of modern decorative mesh curtain.

The advantage of Metal coil drapery is it could slid on the channel as a whole piece, and the cost performance is more suitable for customers, compared with chain link curtain, and other decorative mesh.

The chain on the surface of the curtain can secure the rippled effect.

Various of color

Original metallic color, or spray
chart into bronze, gold, ebony black,
purplish red, etc, customized color is
available.

QKMCD-01



QKMCD-02



QKMCD-03



QKMCD-04



QKMCD-05



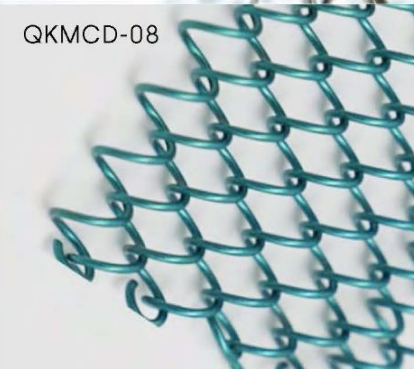
QKMCD-06



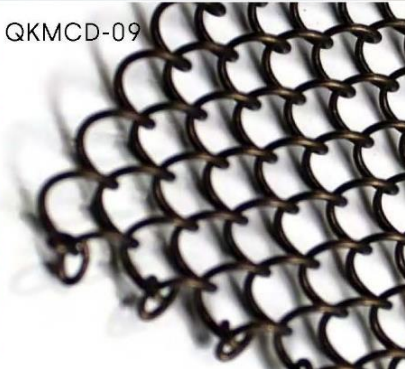
QKMCD-07



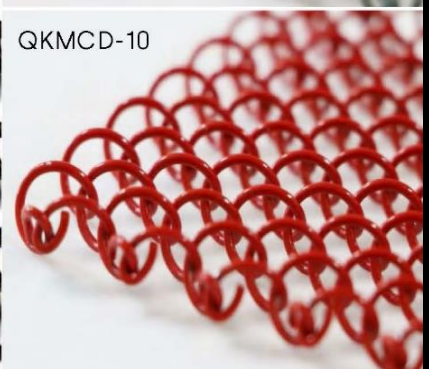
QKMCD-08



QKMCD-09

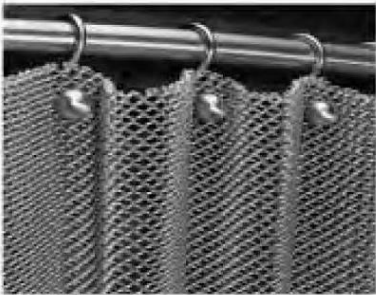


QKMCD-10

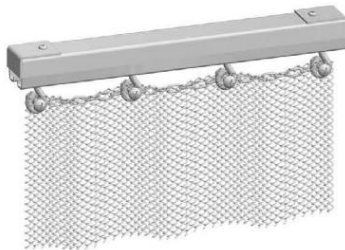


Fix instruction

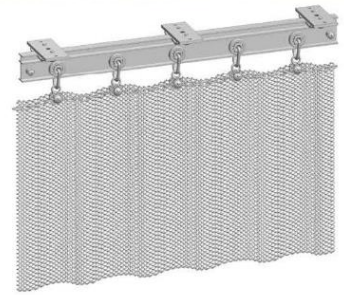
Metal coil drapery is made from stainless steel or aluminum wires. When used as decoration, metal coil drapery looks like a whole piece, which differs from the strip-type chain link curtain



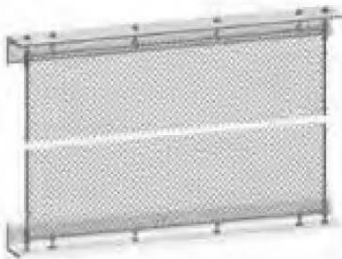
pipe mounting



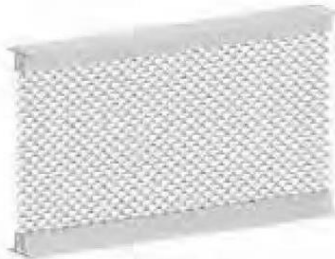
straight fix



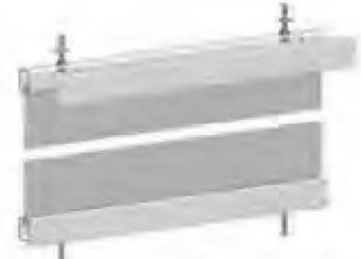
curved rail fix



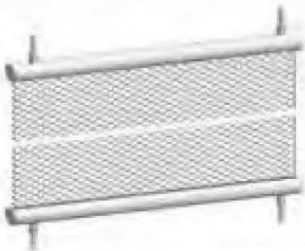
angle fix



avenue fix



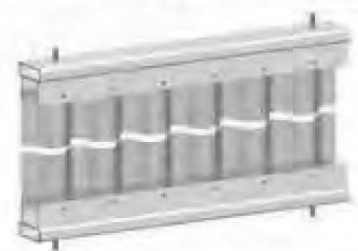
beam fix



tube fix



vise fix



weave fix

Due to the luxurious and practical feature

Metal coil drapery has been chosen as today's decoration style by much more designers.

It is applied broadly in _____

Axhibition

Hotels

Restaurants

Lobby

Living

Bathroom





Chain Link Curtain

Chain Link Curtain is also called chain fly screen. It is made of 100% aluminum materials and has excellent quality.



Dr

Nowadays

Chain link curtains have become a popular decoration option for modern people, and compared with other types like ring mesh curtain and metal coil drapery chain link curtain is relatively economic.

The aluminum chain curtain has the advantages of lightweight, simple structure and convenient installation.



Color Chart

Chain link curtain is made from aluminum material and with various colors covering.

1 Popular colors for Chain Link Curtain in above color chart for your choices.

2 Each color could be did gloss color vision and matte color vision.

3 Customized color is also acceptable.

GLOSS / MATTE



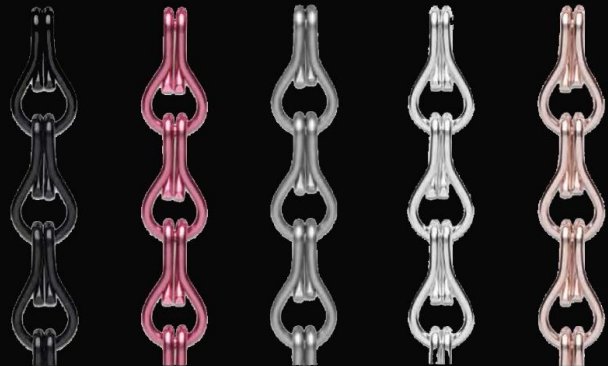
BLACK

FLORIDA PINK

NICKEL

SILVER

PALE PINK



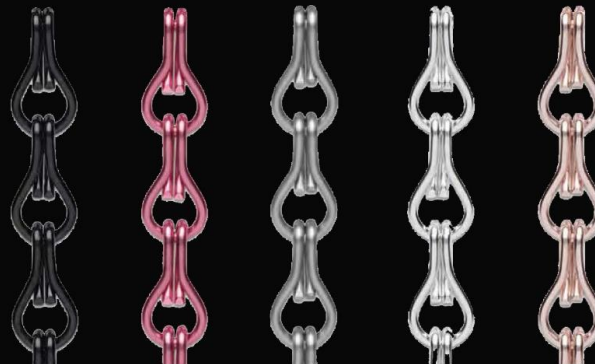
BLACK

FLORIDA PINK

NICKEL

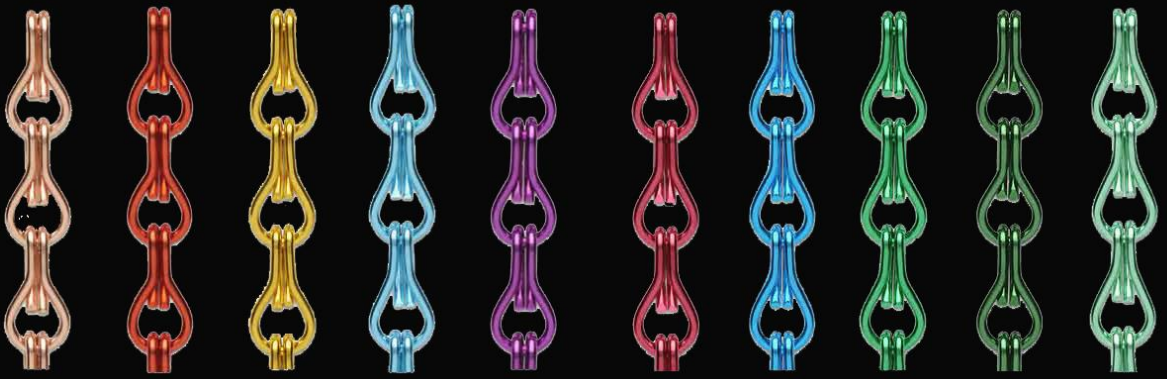
SILVER

PALE PINK





ORANGE BROWN LIME SAND COPPER GREY COFFEE BLUE APRICOT AMETHYST



ROSE GOLD RED GOLD TURQUOISE PURPLE BOURDEAUX COBALT MOSS GREEN EMERALD

The overall vision of the us was to create technologically sophisticated and vibrant spaces, communicating a sense of fun, warmth and welcome to its guests.

Installation Type

STRAIGHT TRACK

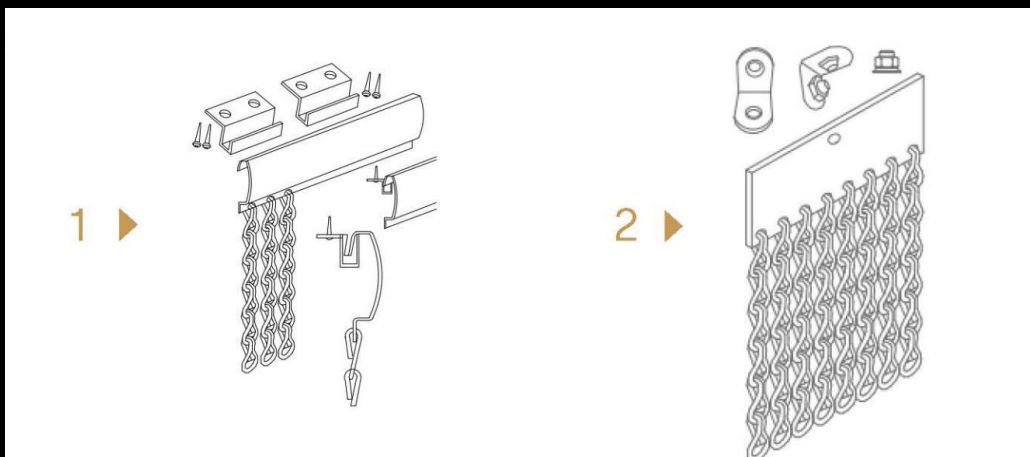
INSTALLATION

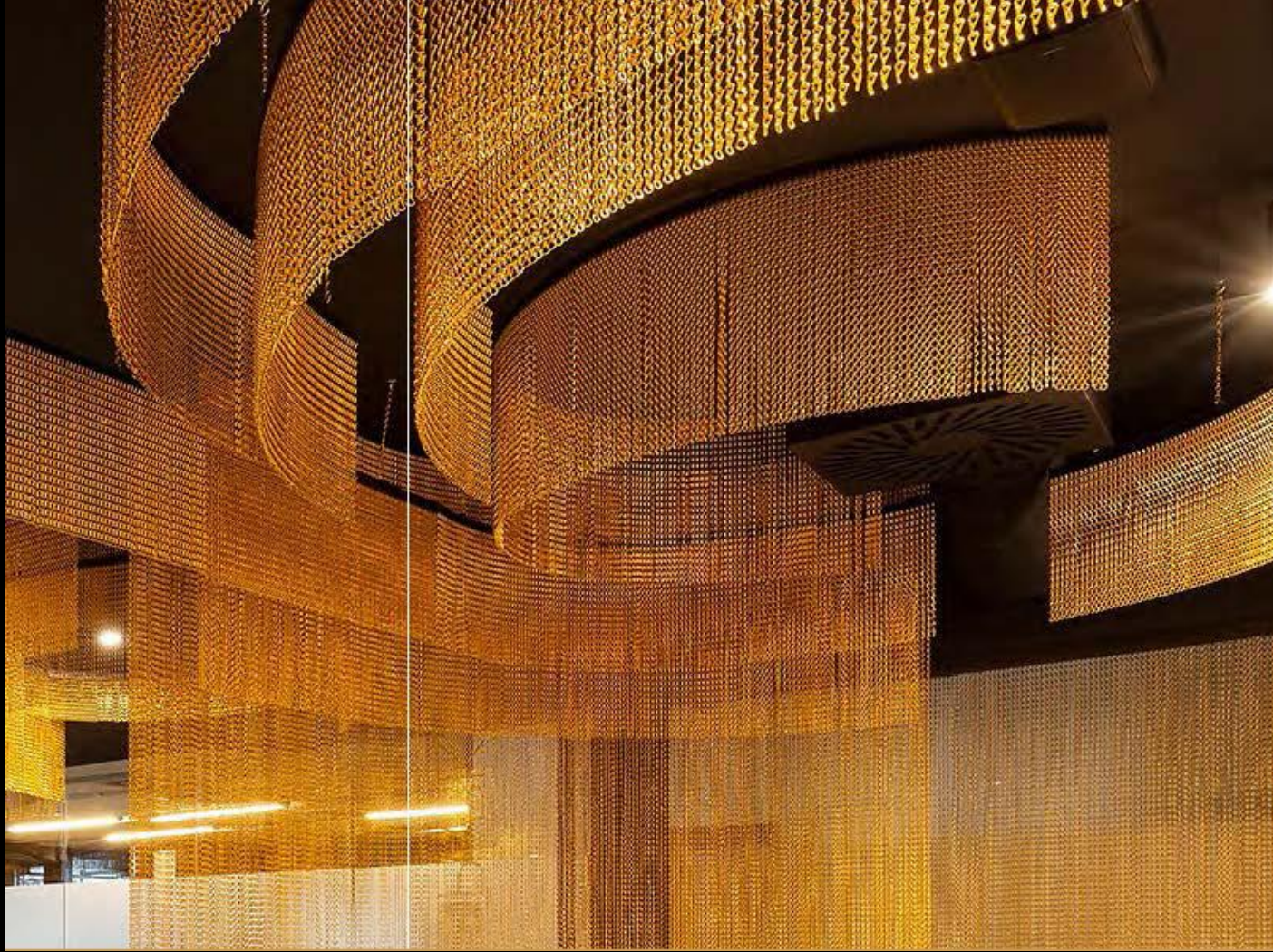
Straight track is a straight one which have uniform holes. It is the most common and economical type track. Straight track suitable for the straight designed chain link curtains which will installed on the wall or ceiling with simple accessories and don't need slid to open and close. It is firm and durable.

CURVED TRACK

INSTALLATION

Curved track has cambered shape which can adapt to cambered installation conditions. Like the straight track, it can not be slid to open and closed, too. It can satisfy the applications of hotels or restaurant for space divider, office buildings to design a cambered space and other cambered shapes partition design.





Application Scenarios

It's easy to install and has unique appearance, applied to various occasions, purposes, highlighting the elegant temperament, extraordinary personality and noble taste.





Ring Mesh

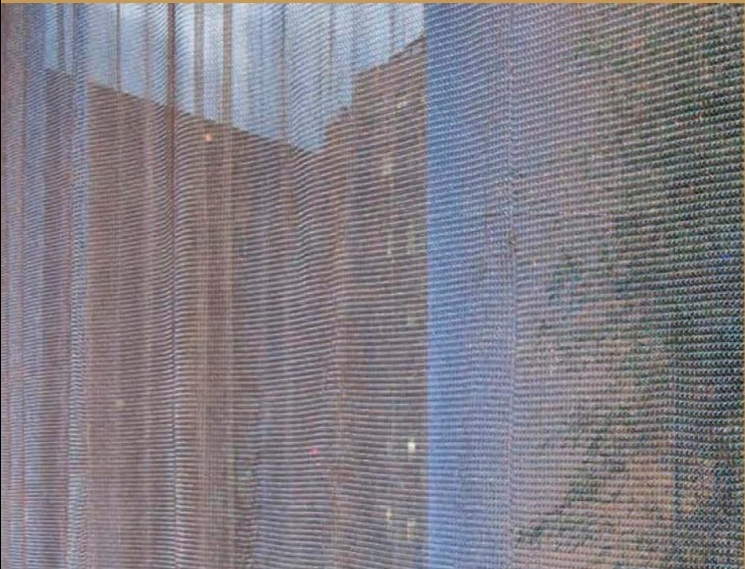
Type specification

Ring mesh also named chainmail mesh. It is another new decorative materials at modern architectural design territory. It is made of carbon steel wire or stainless steel wire with various colors and shows an imaginary and elegant atmosphere. Metal ring mesh is widely used in the architectural constructions, such as space divider, window curtain, wall decoration, facade cladding.



Application Scenarios

Fit all of your interior design and
architectural needs



type 1

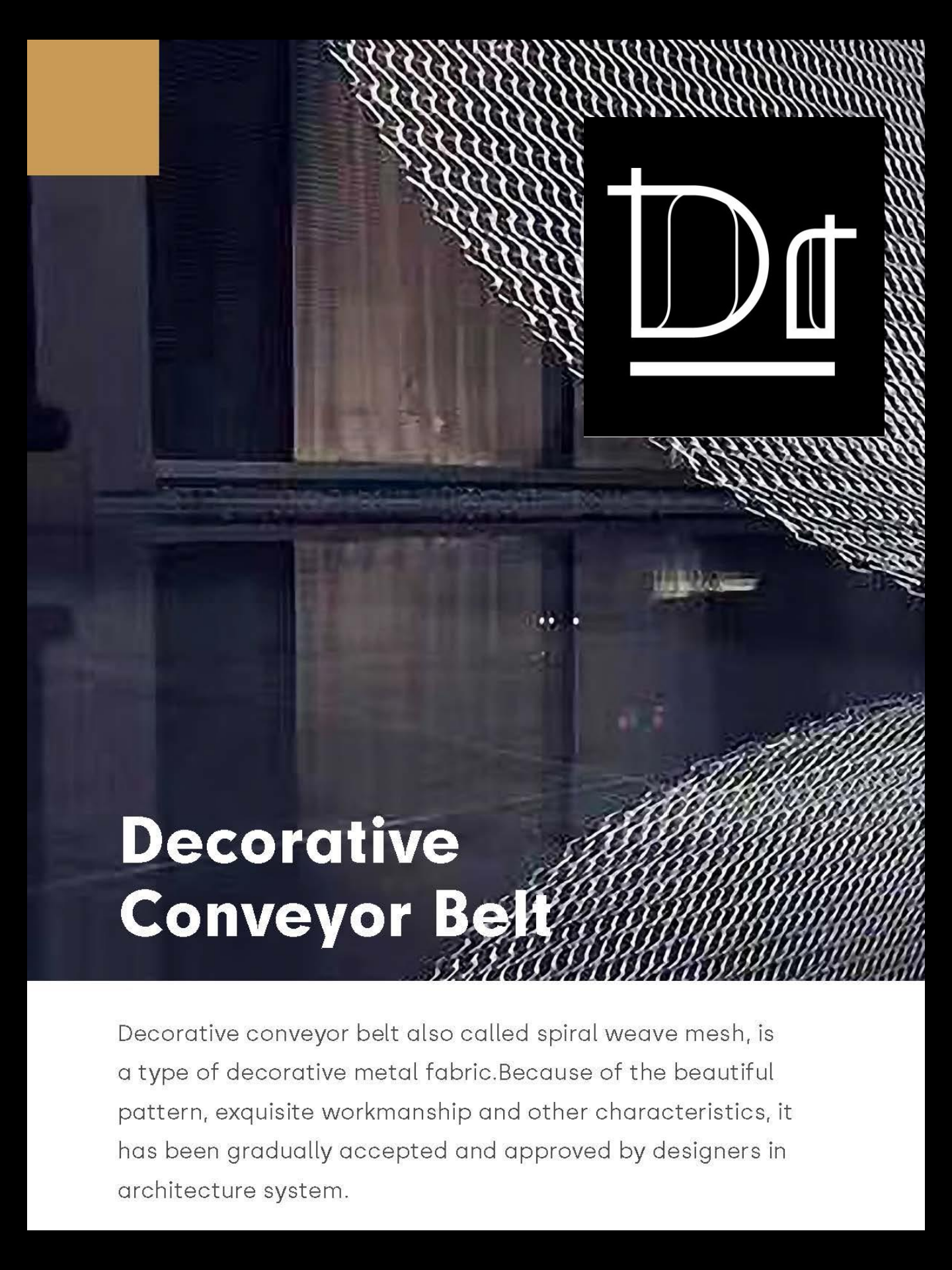


type 2



type 3



A decorative conveyor belt with a spiral weave mesh pattern is shown in a dark, industrial setting. The belt is illuminated, highlighting its intricate, wavy texture. In the background, there are dark metal structures and a wooden panel. A black square with the white letters 'Dr' is overlaid on the right side of the image. A solid orange square is in the top left corner.

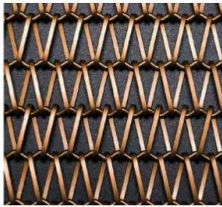
Dr

Decorative Conveyor Belt

Decorative conveyor belt also called spiral weave mesh, is a type of decorative metal fabric. Because of the beautiful pattern, exquisite workmanship and other characteristics, it has been gradually accepted and approved by designers in architecture system.

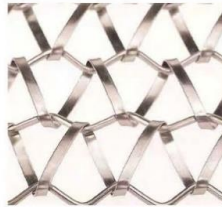
Type specification

QKDCB-01



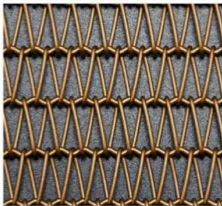
Spiral Diameter: 1x2.5mm
Spiral Pitch: 14.5mm
Cross Rod Diameter: 2mm
Cross Rod Pitch: 25.5mm
Weight: 5kg/m²
Opening Area: 73%

QKDCB-02



Spiral Diameter: 1x7.2mm
Spiral Pitch: 38mm
Cross Rod Diameter: 3mm
Cross Rod Pitch: 30mm
Weight: 5.3kg/m²
Opening Area: 80%

QKDCB-03



Spiral Diameter: 1.2mm
Spiral Pitch: 8mm
Cross Rod Diameter: 1.3mm
Cross Rod Pitch: 13mm
Weight: 3.5kg/m²
Opening Area: 63%

QKDCB-04



Spiral Diameter: 2x4mm
Spiral Pitch: 20mm
Cross Rod Diameter: 3.5mm
Cross Rod Pitch: 40mm
Weight: 9.48kg/m²
Opening Area: 55%

QKDCB-05



Wire Diameter: 1.6mm
Warp Pitch: 7mm
Weft Pitch: 120mm
Weight: 2.5kg/m²
Opening Area: 76%

QKDCB-06



Wire Diameter: 2.35mm
Warp Pitch: 12.7mm
Weft Pitch: 100mm
Weight: 3.4kg/m²
Opening Area: 80%

QKDCB-07



Wire Diameter: 1.6mm
Spiral Coil Quantity: 69
Opening Area: 82%

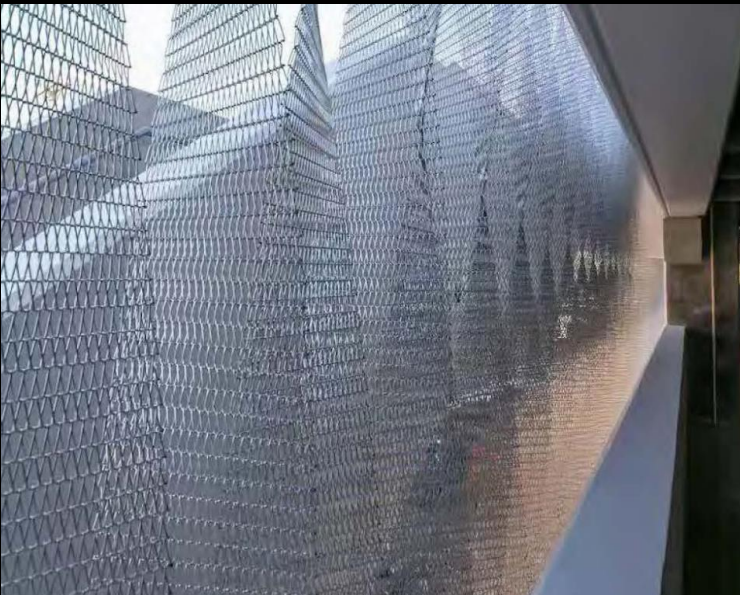
QKDCB-08



Spiral Diameter: 2.03mm
Spiral Pitch: 1.29mm
Cross Rod Diameter: 2.03mm
Cross Rod Pitch: 4.35mm
Number Of Cross Rod Per Spiral: 4
Opening Area: 0%



A variety of conveyor belt types provide designers with a variety of design choices, better service for design, in order to achieve the most perfect interior and exterior decorative effect.



Decorative conveyor belt is widely used in

Architectural decoration, such as room dividers, guardrail, ceiling decoration, wall decoration, door curtain, shop exhibition stands, building facade.

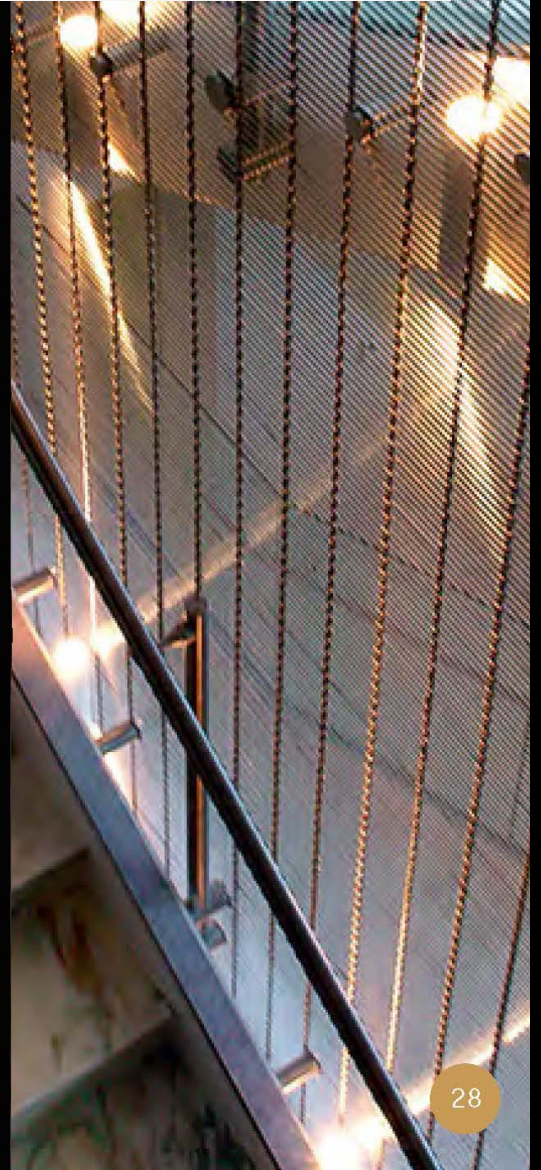




Dt

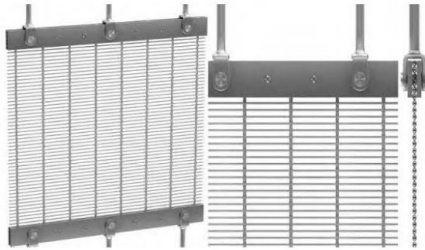
Wire Drapery

Wire drapery is also called Flexible metal drapery. It is mostly made of non-corrosive stainless steel rope and wire.

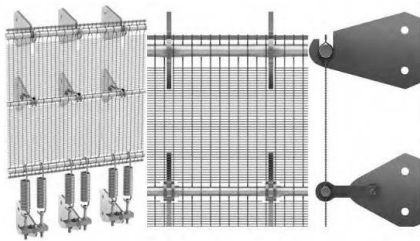


Different Installation Ways

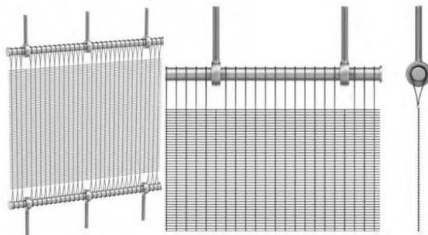
1



2



3



For Architectural, it is a kind of decorative metal meshes. It is competent for interior and exterior ornamentation. For interior, it can be used as room dividers, decorative curtains and ceiling curtains.

PRODUCT SPECIFICATION



QKWWD-01
Cable Diameter:0.45mmx3
Rod Diameter:0.5mm
Cable Pitch:3.5mm
Rod Pitch:1.6mm
Weight:2.1kg/m²
Opening Area:42%



QKWWD-06
Cable Diameter:2mmx3
Rod Diameter:3mm
Cable Pitch:80mm
Rod Pitch:10mm Weight:6.67kg/m²
Opening Area:65%



QKWWD-02
Cable Diameter:0.45mmx3
Rod Diameter:0.5mm
Cable Pitch: 3.5mm
Rod Pitch:1.6mm
Weight:2.3kg/m²
Opening Area:42%



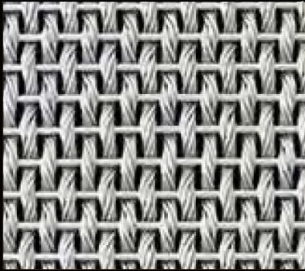
QKWWD-03
Cable Diameter:0.75mmx4
Rod Diameter:1.5mm
Cable Pitch:26.4mm
Rod Pitch:3mm
Weight:5.3kg/m²
Opening Area:44%



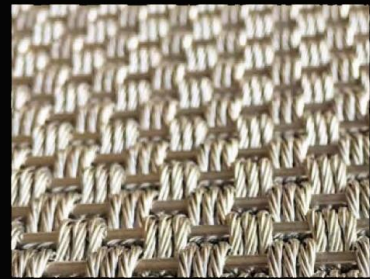
QKWWD-07
Cable Diameter:2.75mmx2 Rod
Diameter:4mm
Cable Pitch:40mm
Rod Pitch:14.5mm
Weight:9.41kg/m²
Opening Area:62%



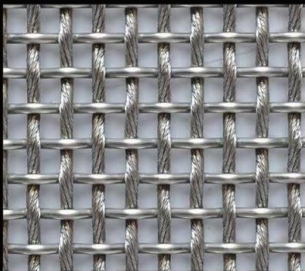
QKWWD-04
Cable Diameter:1mmx4
Rod Diameter:2mm
Cable Pitch:36mm
Rod Pitch:4mm
Weight:7kg/m²
Opening Area:44%



QKWWD-09
 Cable Diameter:2.5mmx1
 Rod Diameter:2mm
 Cable Pitch:7mm
 Rod Pitch:7mm
 Weight:6.45kg/m²
 Opening Area:45.9%



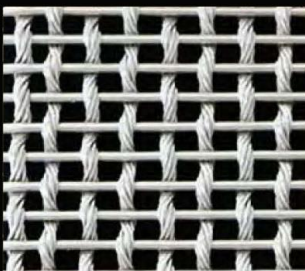
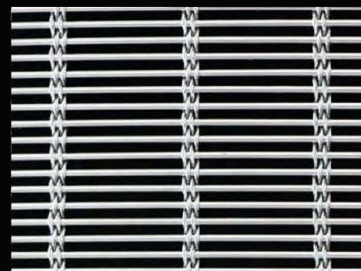
QKWWD-08
 Cable Diameter:1.5mmx3
 Rod Diameter: 2.5mm
 Cable Pitch:5mm
 Rod Pitch:7.5mm Weight:8.15kg/m² Opening Area:0%



QKWWD-10
 Cable Diameter:2mmx3
 Rod Diameter:3mm
 Cable Pitch:80mm
 Rod Pitch:10mm
 Weight:6.67kg/m²
 Opening Area:65%



QKWWD-11
 Cable Diameter:2.5mmx1
 Rod Diameter:2mm
 Cable Pitch:6mm
 Rod Pitch:8mm
 Weight:9.8kg/m²
 Opening Area:44%

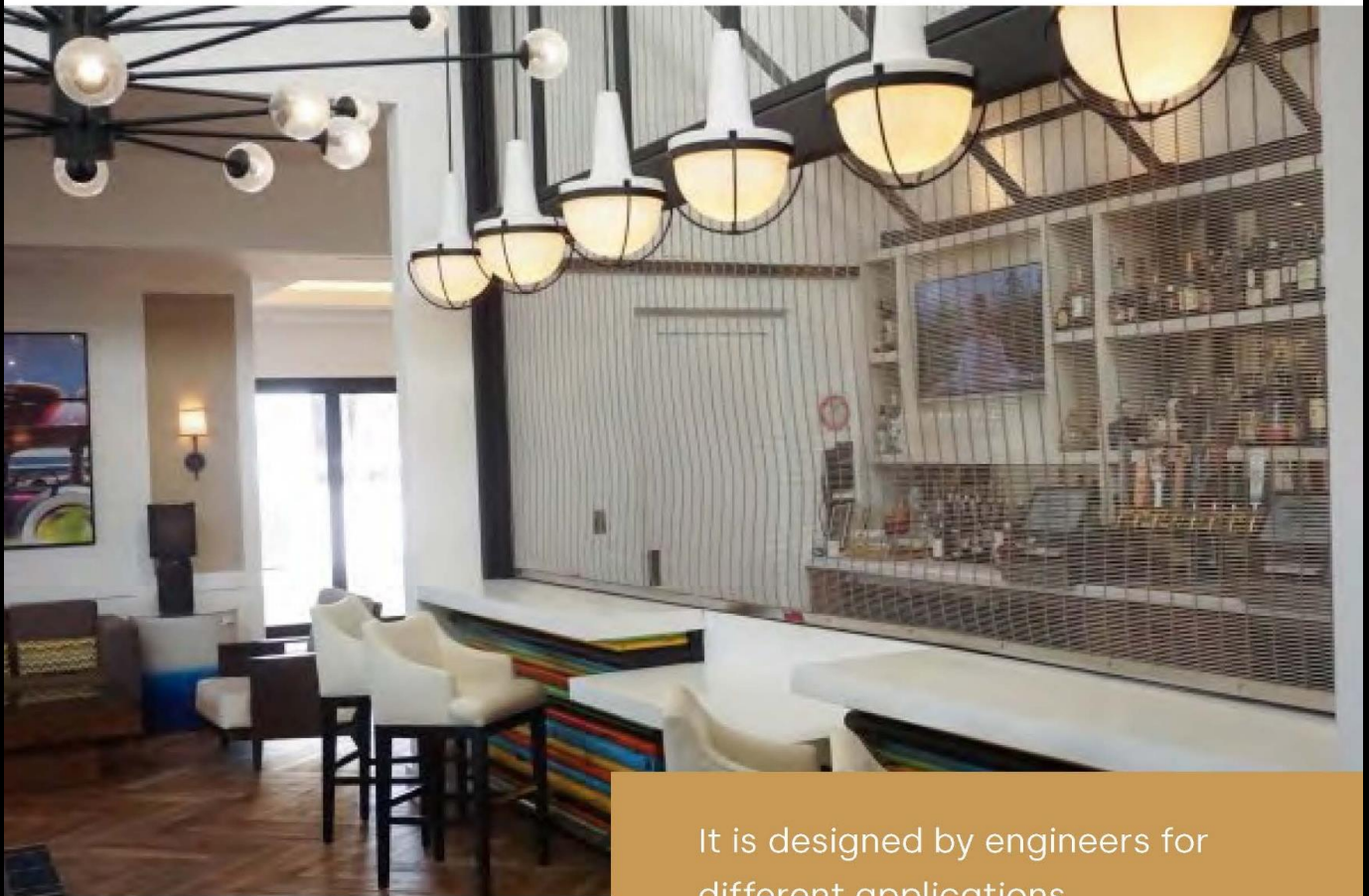


QKWWD-12
 Cable Diameter:2mmx1
 Rod Diameter:1.5mm
 Cable Pitch:17.5mm
 Rod Pitch:3.5mm
 Weight:5.53kg/m²
 Opening Area:51%

QKWWD-05
 Cable Diameter:2mmx4
 Rod Diameter:3mm
 Cable Pitch:50mm Rod Pitch:6mm
 Weight:11.56kg/m²
 Opening Area:42%

Application Scenarios

For exterior, it is an ideal option for building facade, column cladding, and wall coverings. It is also a good choice of protective application for stairs, elevator cabs, rails and balustrades.



It is designed by engineers for different applications.

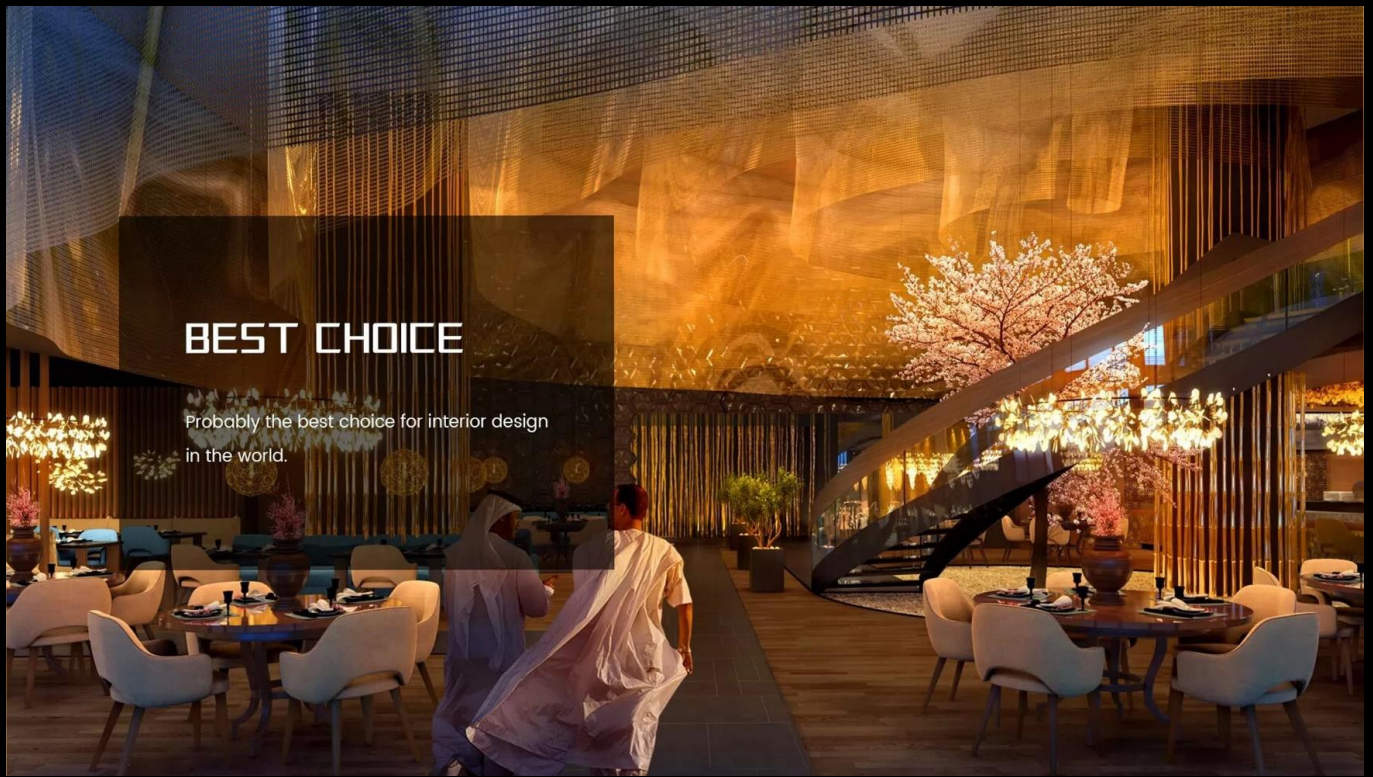
Application Scenarios

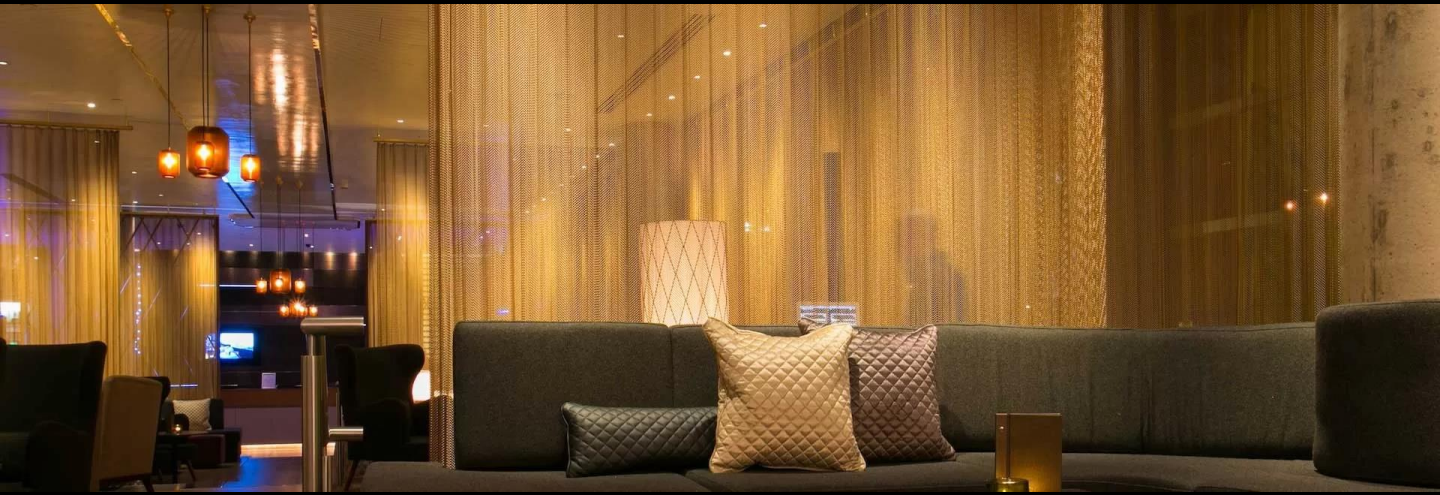
The mesh could be woven with customized logos or symbols or other designs.

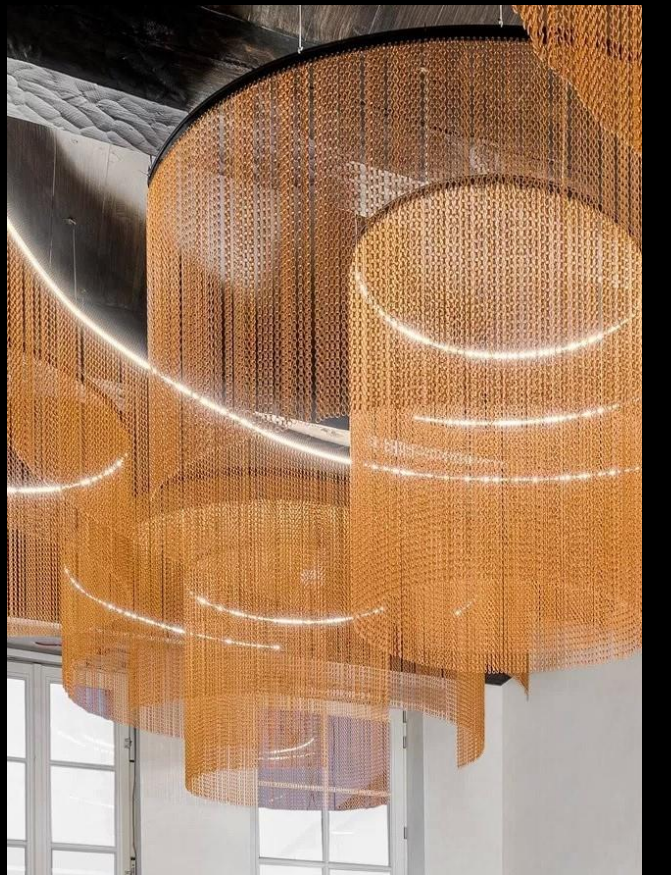


BEST CHOICE

Probably the best choice for interior design
in the world.



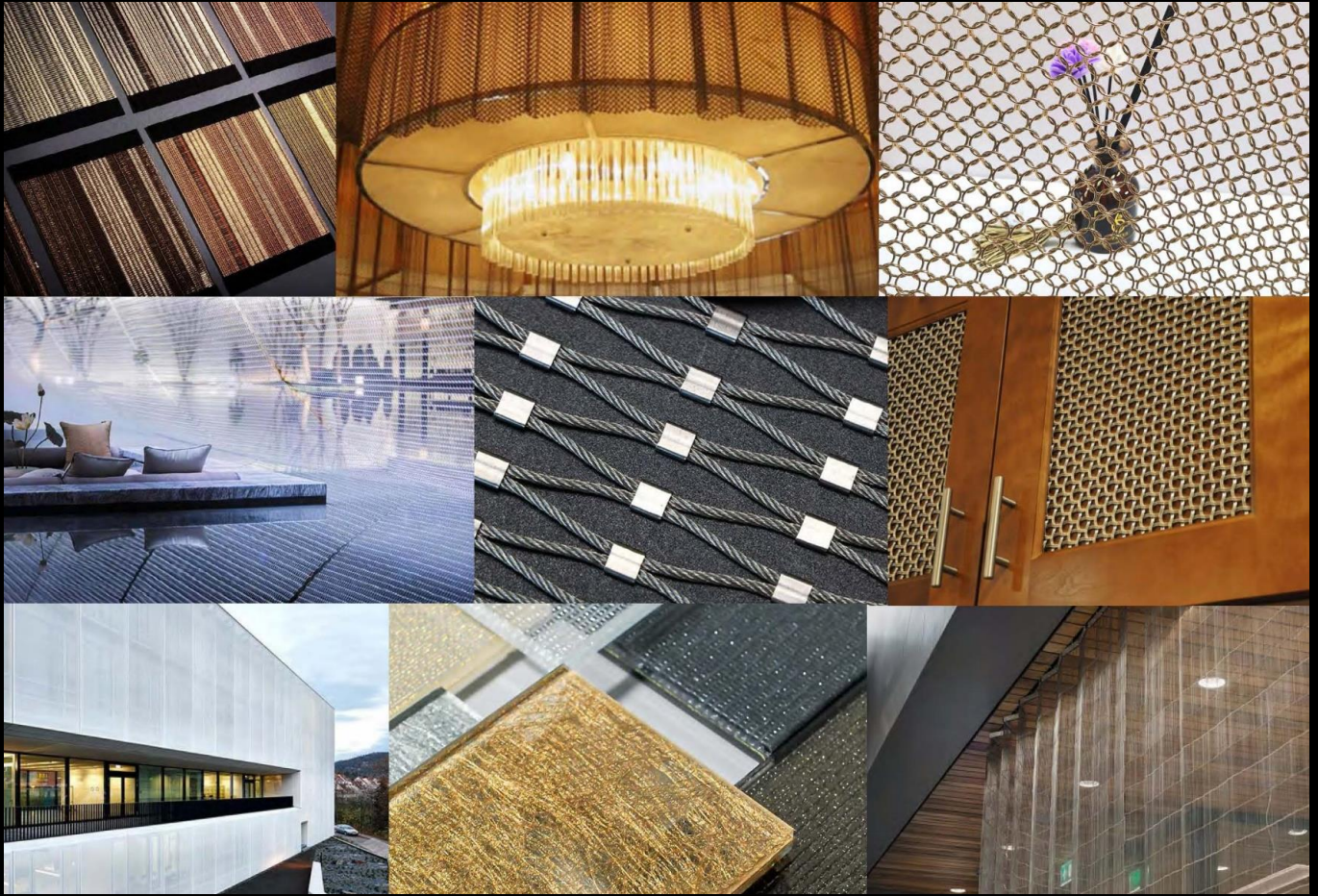












CONCEPT STORE

Address : D35 Room, RCA Block D,
21/119 Soi Soonvijai-Rama 9, New Phetchburi
Rd.,Bangkapi, Hueykwang, Bangkok 10310

Tel. : +66 61778 9111 / +66 80071 9636

Website : www.diconcept.bz

<https://www.facebook.com/DiConceptStore>

Line ID : @diconceptstore